



Sergé

Fabric code

WS03A

OF 3%

Ultra wide range of proprietary woven screen fabrics. Unsurpassed flexibility, applicable in any kind of situation.



External and internal applications

The Screen Essentials



Fabric code

WS03A
OF 3%

The Screen Essentials

Sergé

Yarn

Technical specifications	Average Values	Standard
Titer	165 tex	ISO 1889 (2009)
Weighted composition	Glass 41.5%, PVC 58.5%	ISO 3801 (1977)
Diameter	0.38 mm	
Environment		Oekotex standard 100

Fabric



Type of fabric	PVC-coated fiberglass fabric
Weave pattern	twill weave
Widths	1600, 1800, 2050, 2200, 2500, 2850, 3200 mm depending on colour (see overview on the right page)
Roll length (nominally)	50 m / 3200 mm: 33 m

Technical specifications	Average Values	Standard
Thickness	0.80 mm	ISO/DIS 5084.2 (1996)
Mass	544 g/m ²	ISO 3801 (1977)
Fire resistance	M1 FR B1 C-s3, d0	NF P92-503 (1995) NFPA 701 (2010) DIN 4102 (1998) EN 13501-1 (2010)
Breaking strength	warp 310 daN, weft 230 daN	ISO 13934-1 (1999)
Elongation at break	warp 3.8%, weft 4.2%	ISO 13934-1 (1999)
Tear resistance	warp 10 daN, weft 13 daN	ISO 4674 part 1 method A (2003)
Acoustics	α_w : 0,10	ISO 354:2003
Colourfastness	7 scale of blue	ISO 105 B02 (1994)
Air porosity	1030 l/m ² /sec	ISO/DIS 9237 (1995)

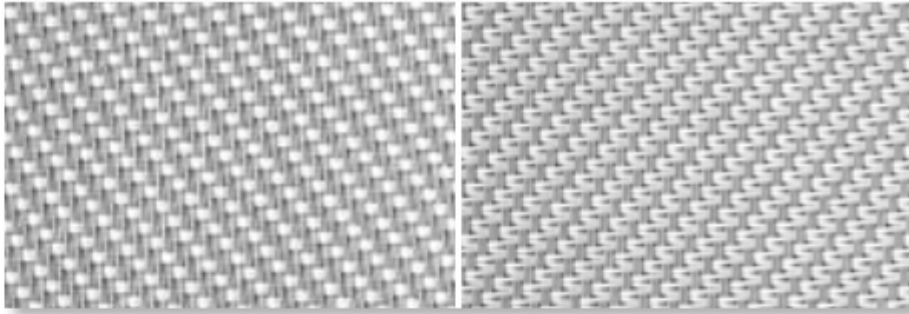
The Quality Chain

General - specifications are purely indicative and may not be considered as binding. Colours may vary from the samples shown

Cutting	crush or ultrasonic; railroad or width out of roll width
Welding	thermal, HF, ultrasonic, sewing
Cleaning	remove dust from the fabric surface, then wipe gently with a humid soft sponge while using a mild detergent

117101 pearl-white - A/B

Widths: 1600, 1800, 2050, 2200, 2500, 2850 mm



Solar Heat & Light Control Properties

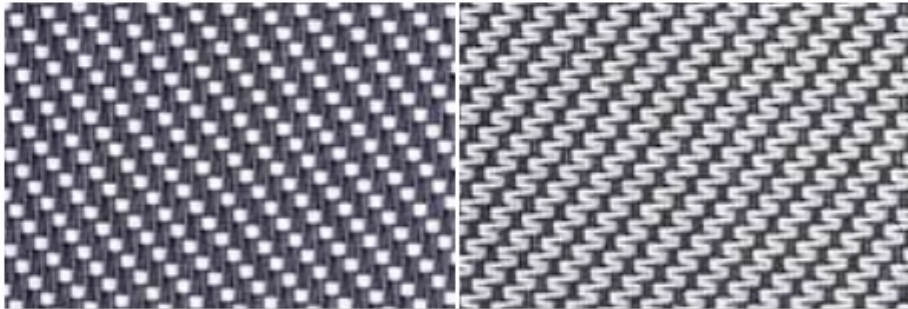
	Ts	Rs	As	Tv	TVdiff	TVdir	Tuv	TVdif-h	Glare Control
A	7.2	46.9	45.9	5.8	3.3	2.4	2.8	4.7	Class 2
B	7.2	53.5	39.3	5.8	3.3	2.4	2.8	4.7	Class 2

gtot

	A		B		C		D	
	ext.	int.	ext.	int.	ext.	int.	ext.	int.
A Values	0.16	0.45	0.13	0.46	0.09	0.42	0.07	0.27
A Classes	2	1	3	1	4	1	4	2
B Values	0.15	0.41	0.12	0.42	0.08	0.39	0.06	0.26
B Classes	3	1	3	1	4	1	4	2

108101 grey-white - A/B

Widths: 1600, 1800, 2050, 2200, 2500, 2850, 3200 mm



Solar Heat & Light Control Properties

	Ts	Rs	As	Tv	TVdiff	TVdir	Tuv	TVdif-h	Glare Control
A	4.4	27.2	68.4	4.4	1.8	2.6	3	3.5	Class 3
B	4.4	38.9	56.7	4.4	1.8	2.6	3	3.5	Class 3

gtot

	A		B		C		D	
	ext.	int.	ext.	int.	ext.	int.	ext.	int.
A Values	0.18	0.56	0.14	0.56	0.09	0.48	0.08	0.28
A Classes	2	0	3	0	4	1	4	2
B Values	0.16	0.49	0.12	0.5	0.08	0.44	0.07	0.27
B Classes	2	1	3	1	4	1	4	2

108108 grey

Widths: 1600, 1800, 2050, 2200, 2500, 2850, 3200 mm



Solar Heat & Light Control Properties

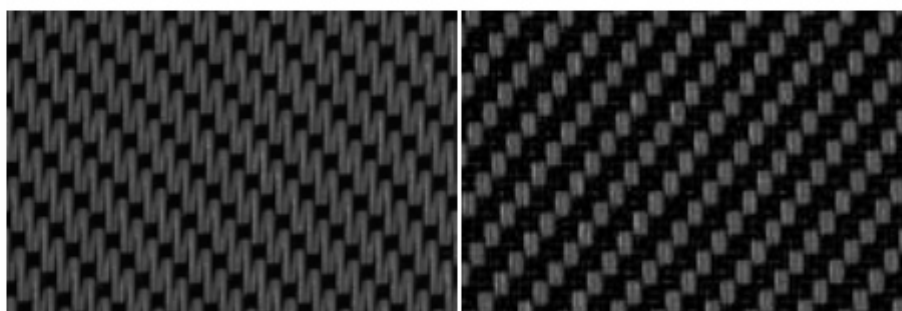
	Ts	Rs	As	Tv	TVdiff	TVdir	Tuv	TVdif-h	Glare Control
	5.1	14.2	80.7	4.9	0.5	4.4	4.8	3.7	Class 3

gtot

	A		B		C		D	
	ext.	int.	ext.	int.	ext.	int.	ext.	int.
Values	0.22	0.64	0.17	0.62	0.1	0.52	0.09	0.3
Classes	2	0	2	0	3	0	4	2

108118 grey-black - A/B

Widths: 1600, 1800, 2050, 2200, 2500, 2850, 3200 mm



Solar Heat & Light Control Properties

	Ts	Rs	As	Tv	TVdiff	TVdir	Tuv	TVdif-h	Glare Control
A	3.7	12.7	83.6	3.7	0.4	3.2	3.6	2.7	Class 3
B	3.7	9.6	86.7	3.7	0.4	3.2	3.6	2.7	Class 3

gtot

	A		B		C		D	
	ext.	int.	ext.	int.	ext.	int.	ext.	int.
A Values	0.21	0.64	0.16	0.63	0.1	0.53	0.09	0.3
A Classes	2	0	2	0	4	0	4	2
B Values	0.22	0.66	0.17	0.65	0.1	0.54	0.09	0.3
B Classes	2	0	2	0	3	0	4	2

118118 black

Widths: 1600, 1800, 2050, 2200, 2500, 2850, 3200 mm



Solar Heat & Light Control Properties

	Ts	Rs	As	Tv	TVdiff	TVdir	Tuv	TVdif-h	Glare Control
	2.6	5.2	92.2	2.6	0.3	2.3	2.6	2	Class 3

g_{tot}

	A		B		C		D	
	ext.	int.	ext.	int.	ext.	int.	ext.	int.
Values	0.22	0.69	0.16	0.67	0.1	0.55	0.09	0.3
Classes	2	0	2	0	4	0	4	2

116101 linen-white - A/B

Widths: 1600, 1800, 2050, 2200, 2500, 2850 mm



Solar Heat & Light Control Properties

	Ts	Rs	As	Tv	TVdiff	TVdir	Tuv	TVdif-h	Glare Control
A	15.2	56.8	28	13.5	9.8	3.7	4.2	11.5	Class 1
B	15.2	58.9	25.9	13.5	9.8	3.7	4.2	11.5	Class 1

g_{tot}

	A		B		C		D	
	ext.	int.	ext.	int.	ext.	int.	ext.	int.
A Values	0.2	0.4	0.17	0.41	0.13	0.39	0.09	0.26
A Classes	2	1	2	1	3	1	4	2
B Values	0.19	0.39	0.17	0.4	0.12	0.38	0.09	0.26
B Classes	2	1	2	1	3	1	4	2