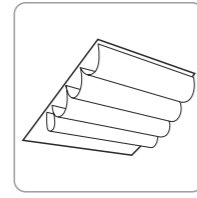


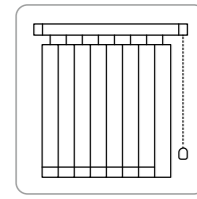
Roman Shades



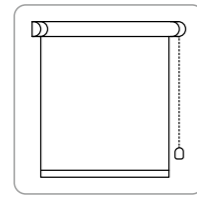
Velums



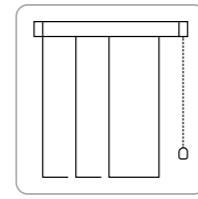
Roof Blinds



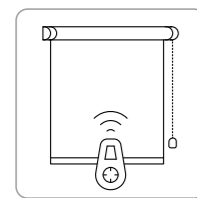
Vertical Blinds



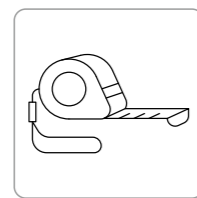
Roller Blinds



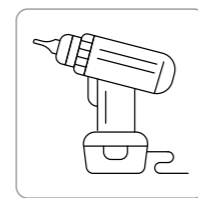
Japanese Curtains



Motorized Roller Blinds



Measuring



Installation



# M-SCREEN





## M-Screen

Composition	25% PES 75% PVC
Weave Pattern	Basket 2/1
Width	200, 250, 300 cm
Weight	425 g/m <sup>2</sup>
Thickness	0.57 mm
Roll length	30 m
Flame Retardancy (FR)	M1 / NF P 92-503 B1 / Din 4102 FR / NFPA 701 10
Moisture Resistant	Yes
Transparency Level	Transparent
Backside application	No
Antibacterial	Yes
Openness Factor	3%
LEED Support	Yes
Acoustic Coefficient (α)	0.25, BS EN ISO 11654
Color Fastness	7, ISO105 B 02

Technical information specified in this catalog should be evaluated in accordance with the General Terms & Conditions of Sale of Trend Blinds & Curtains Istanbul or the technical sections of the contact of the related project and hence is not legally binding.



**Thermal and optical factors in the European standard EN 14501**

COLOR	CODE	RS	AS	TS	TV	TUV
	<b>MS10</b>	20	76	4	4	3
	<b>MS15</b>	9	86	5	3	2
	<b>MS20</b>	15	81	4	5	5
	<b>MS25</b>	17	78	5	4	4

**TS: Solar Transmittance**

% of solar energy transmitted through the fabric. A low percentage means the fabric performs well at reducing solar energy.

**RS: Solar Reflectance**

% of solar radiation reflected by the fabric. A high percentage means the fabric performs well at reflecting solar energy.

**AS: Solar Absorptance**

% of solar radiation absorbed by the fabric.

A low percentage means the fabric absorbs little solar energy.

Solar radiation is always partially transmitted through, absorbed or reflected by the fabric.

The sum of all 3 equals 100.

Ts + Rs + As = 100% of solar energy.

**Tv Visible light transmittance**

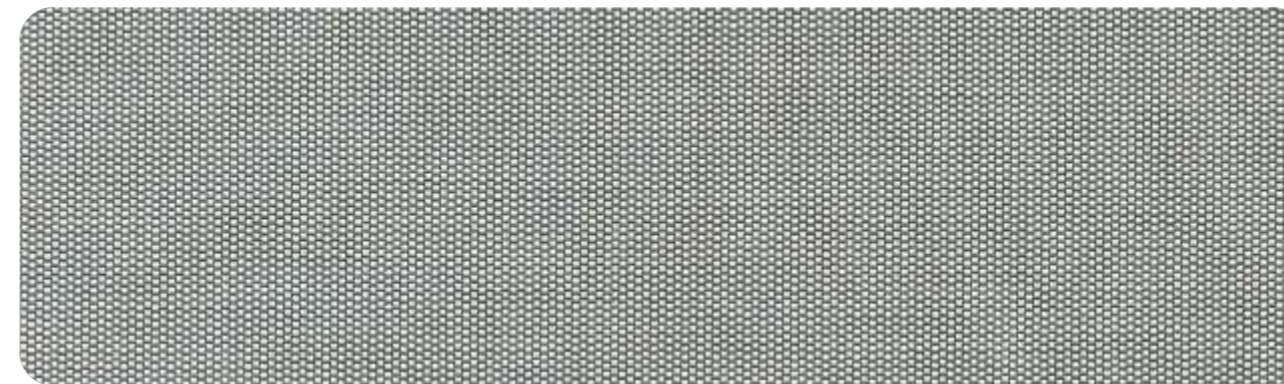
total percentage of light radiated through the fabric over a wavelength of 380 to 780nm (nanometers), called the visible spectrum (total illumination)

**In a nutshell**

Functional sun breaker	<b>Energy efficient</b>
Made of environmentally friendly certified materials	<b>Antibacterial</b>
Advanced yarn production process	<b>Superior flame-retardancy rating</b>
Strong resistance and long product life	<b>Durable</b>
Warm and charming decorative appearance	<b>Stylish</b>

**trend**<sup>®</sup>  
Blinds & Curtains

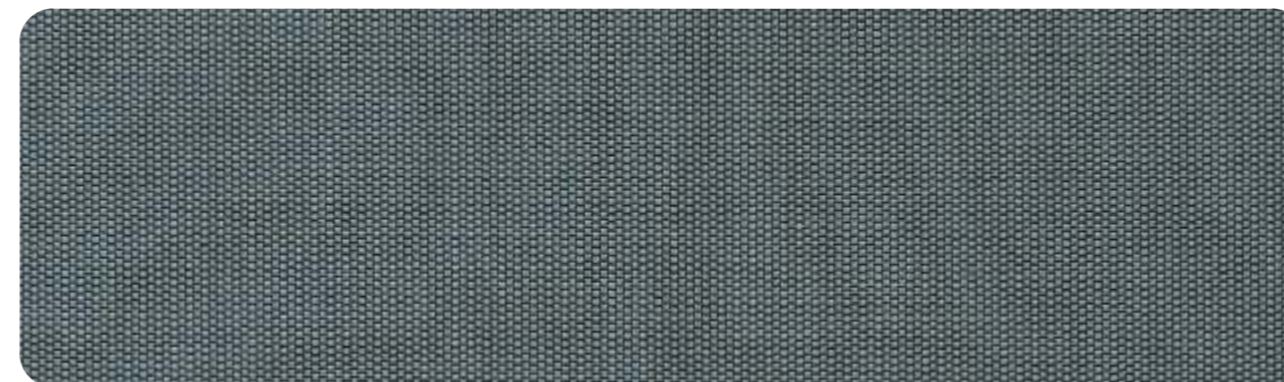
**M-Screen**



**MS10**



**MS15**



**MS20**



**MS25**

